



Danish Military Sports Federation
and

Airbase Karup Sportsclub

Supported by Herning and Vestjysk orienteering clubs

Inform you about

World Biathlon Orienteering Championships 8-10th of August 2024

In Ulfborg
Denmark

Bulletin 3

General instruction



Program:

Wednesday 7th August

- | | |
|---------------|--|
| 10.00 – 16.00 | Opening hours Competition office at Event centre, access to weapon storage |
| 10.00 - 16.00 | Shooting training at Ulfborg (Event Centre) |
| 10.00 - 16.00 | Modelevent, location orienteering and orienteering |
| 16.00 | Team leader meeting Event Centre |
| 19.00 | Opening ceremony in the city of Holstebro |

Thursday 8th August

⇒ **Classic competition**

- | | |
|---------------|--|
| 08.00 – 16.00 | Opening hours Competition office at Event Centre, access to weapon storage |
| 08.00 – 09.30 | Weapon control |
| 08.00 – 11.00 | Adjustment shooting |
| 10.30 - 16.00 | Classic Competition |
| 17.00 | Team leader meeting at Event Centre |
| 18.30 | IBOF General Assembly at Event Centre |

Friday 9th August

⇒ **Sprint competition**

- | | |
|---------------|--|
| 08.00 – 14.00 | Opening hours Competition office at Event Centre, access to weapon storage |
| 08.00 – 09.30 | Weapon control |
| 08.00 – 10.45 | Adjustment shooting |



11.00 - 15.00

Sprint Competition

Before 15.00

Runner names for the relay teams to the competition office

16.00

Team leader meeting at Event Centre

19.00

Dinner and pricegiving ceremony

Saturday 10th august

⇒ **Relay competition**

08.00 – 12.00

Opening hours Competition office at Event Centre, access to Weapon storage

08.00 – 09.00

Weapon control

08.00 – 09.45

Adjustment shooting

10.00 - 13.00

Relay Competition

13.00

Pricegiving ceremony (as soon as it is possible) and closing remarks

Event centre

Ulfborg shooting area, Torstedvej 1, 6990 Ulfborg.
56.2597571, 8.3489260

At the Event Centre you can make your Check-in, pick up your bibs, T-shirts (if ordered), Emit tag, get maps for Mode Eevent etc., have your weapon stored in a safe room

Race areas

In the terrain around Ulfborg shooting Area.

Disciplines/Classes

Classic

W/M16 (not championship), W/M20, W/M21, W/M 21B (not championship), W/M35, W/M40, W/M45, W/M50, W/M55, W/M60, W/M65, W/M70, W/M75
Competition sequence: Location orienteering – Orienteering – Prone Shooting – Running loop – Standing shooting - Finish

Sprint

W/M16 (not championship), W/M20, W/M21, W/M21B (not championship), W/M35, W/M40, W/M45, W/M50, W/M55, W/M60, W/M65, W/M70, W/M 75





Competition sequence: Orienteering – Prone shooting – Penalty loop, if any -
Orienteering – Standing shooting – Penalty loop, if any - Finish

Relay

M/W16 (not championship) W/M20, W/M21, W/M21B (not championship)
W/M70, W/M95, W/M120, Mix (not championship)

Competition sequence: Orienteering – Prone shooting – Penalty loop, if any -
Orienteering – Standing shooting – Penalty loop, if any - Changeover / Finish

All teams consist of two participants except M21-teams which consists of three.

Master-teams: Total age (based on year of birth) of team participants, all participants must be born 1989 or earlier.

Mix-teams: two participants, no restriction of age or nationality.

Length of courses, difficulty and penalty loops are according to IBOF's rules.

Rules

All competitions according to IBOF International rules, dated May 2017

Target

Self-marking target system, Kurvinen

Weapon and ammunition

.22 long rifle (calibre 5.6 mm). Every participant bring their own weapon and ammunition.

Weapon Storage

It will be possible to have your weapon stored at the Event Centre. Access when competition office is open

Control system

Emit control system. Organiser give Emit card to all competitors. They will be handed out from the competition office at check in

Map and terrain

The terrain consists of coniferous forest including some open moor land in between. Inland sand dunes form the contour lines of the terrain. Some vegetation is open, giving good visibility, with some scattered thicker parts with low visibility and slow runability.



Check in

All competitors/teams have to make a Check-in at the competition office. At the check-in will be handed over Emit card, bibs, T-Shirt if ordered, tickets for buffet (lunch at event Centre) if ordered, ticket for Banquet.

Food

If you have ordered food this will be handed over from the canteen at the Event centre. Remember your food ticket.

It will be possible to buy coffee, soft drinks, cake, sweets etc. in the canteen. You can pay with DKR or EUR

Opening ceremony

The opening ceremony will be held in the center of Holstebro city, Wednesday the 7th of August 19.00 hour.

Address: Kirkestræde 11, 7500 Holstebro, between Holstebro Church and Town Hall. If bad weather, in the Town Hall.

Shooting training and modelevent

Wednesday the 7th of August you will have the opportunity to have some training at the shooting area on paper targets. We recommended that you also, at this time will make your adjustment so we can spare time on competition days, so you only must confirm your adjustment at competition days. We have only 10 lanes.

It will be possible to have a short orienteering course in similar terrain and a short location orienteering with five target in Stråso.

Bibs

All competitors must wear bibs.

Weaponcontrol

All participants must pass the weapon control before each competition. We will control rifles for the following things.

The distance between the center-line of the barrel and the lower edge of the forestock, including magazine and trigger guard, must not exceed 140 mm

The trigger resistance must be a minimum of 0.5 kg.

(IBU rules)

Adjustment shooting

On competition days it will be possible to make an adjustment shooting on paper targets. We have only 10 lanes so please help each other so you all can make your adjustment.

Lane	Country
1	DEN
2	DEN



3	DEN/SWE
4	SWE
5	SWE
6	SWE
7	FIN
8	FIN
9	FIN/GER
10	UK/JOR/IRAQ/POL

Covering bullet holes every 20 minutes. Changing paper targets every hour.

Banquet and pricegiving ceremony

Banquet and pricegiving ceremony for classic and sprint competition will take place Friday 9th of august at 19.00 at Plexus, Idomlundvej 23a, 7500 Holstebro.

Results

Results can be seen at screen at the event center. For classic competition only your running time.

During the competitions you can follow the results online

8th. august Classic Biathlon-O : <https://live.eqtiming.com/73354#dashboard>

9th. august Sprint Biathlon-O : <https://live.eqtiming.com/73355#dashboard>

10th. august Relay Biathlon-O : <https://live.eqtiming.com/73356#dashboard>

After each competition you can find the results at www.biathlon.dk as soon as possible

Insurance

Competitors participate at their own risk. Insurance against accidents on health or equipment is the responsibility of the competitors, according to national regulations.

T-shirts

We can offer a WBOC T-shirt. The price is d.kr. 75,00/EUR 10,00.

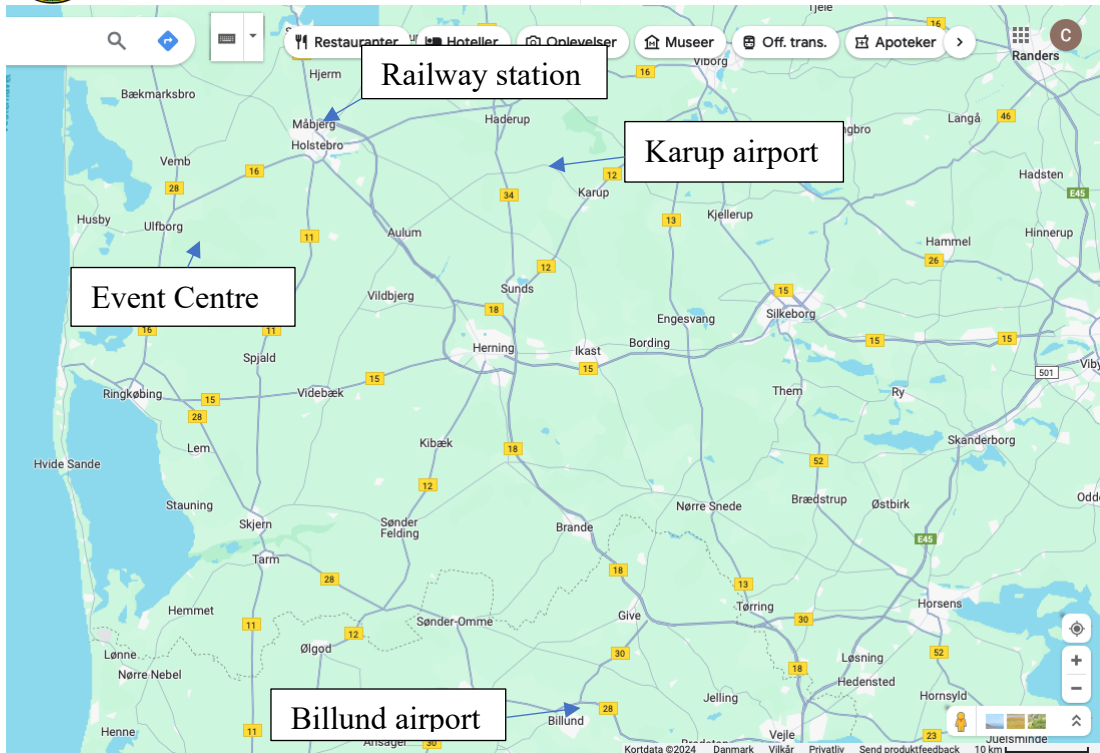
We have the T-shirts in the following size;

Male: S-M-L-XL-XXL-XXXL

Female: XS-S-M-L-XL

If you haven't ordered at registration, it will be possible to buy from the competition office

Travel and Location.



Organisation and contact

Competition leader:

Carsten Helligsø, mail; mr.cykelstyr@fiberpost.dk

Assistant competition leader and financial supervisor:

Varny Vestergaard, mail; vsv@webspeed.dk

Cheif of shooting:

Søren Andersen

Course setting, all disciplines:

Jess Rasmussen

Sponsor etc.

Kenn Kristensen

Cheif of results:

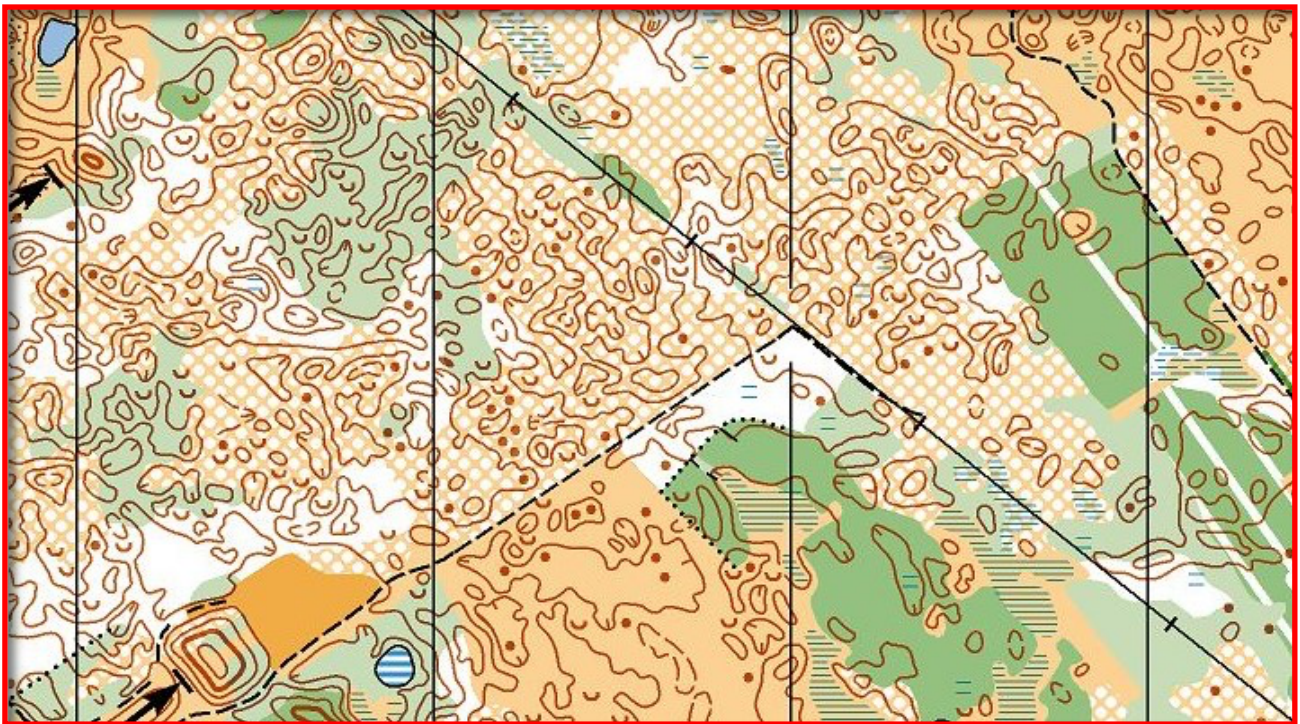
Lars-Ole Kopp

Technical advisor

Morten Vendelbo Johansen



Orienteering terrain



Instruction Classic

Map

Map have been revised spring 2024.

Location orienteering will be on scale 1:7.500 for all classes

Following classes will run on scale 1:10.000

M16, W/M20, W/M21, W/M21B, W/M35, W/M40, W/M45, M/W 50, M55

All other classes will run on scale 1:7.500

Countour interval 2,5 m

Running maps will be printed on waterproof paper

Maps for Location orienteering will be plastic coated. Runners number will be printet on maps for location orienteering.

Start

Distance to starting point is 600 m. Following marked route. Warm up only allowed on route to start.

Runners will be called 3 minutes before starting time

- 3 min. control emit card number
- 2 min. loose control description handed out to runners with holder for this



- 1 min. waiting for start time, at start time map for location orienteering will be handed out

In changing zone between location orienteering and orienteering, maps for location orienteering will be dropped in a box, proceed to boxes with map for orienteering. It is the runners own responsibility to take the right map.

In the changing zone it will be possibly to have some water.

Location orienteering

The route is marked with red/white/green/yellow stripes

Courses

Class	Length (m)	Controls	Scale	Water Stations	Map Size
W16	4,370	13	1:7.500	1	A4
W20	6,390	15	1:10.000	2	A4
W21	6,890	17	1:10.000	2	A4
W21B	4,920	13	1:10:000	1	A4
W35	6,390	15	1:10.000	2	A4
W40	5,570	14	1:10.000	1	A4
W45	5,570	14	1:10.000	1	A4
W50	4,920	13	1:10:000	1	A4
W55	4,370	13	1:7.500	1	A4
W60	4,370	13	1:7.500	1	A4
W65	3,560	10	1:7.500	2	A4
W70	2,860	12	1:7.500	1	A4
W75	2,710	12	1:7.500	1	A4
M16	4,920	13	1:10:000	1	A4
M20	6,890	17	1:10.000	2	A4
M21	7,590	20	1:10.000	2	A4
M21B	4,920	13	1:10:000	1	A4
M35	6,890	17	1:10.000	2	A4
M40	6,390	15	1:10.000	2	A4
M45	6,390	15	1:10.000	2	A4
M50	5,570	14	1:10.000	1	A4
M55	4,920	13	1:10:000	1	A4
M60	4,370	13	1:7.500	1	A4
M65	4,370	13	1:7.500	1	A4
M70	3,560	10	1:7.500	2	A4
M75	2,860	12	1:7.500	1	A4



Shooting area

When you enter the shooting area an official will hand over a control sheet for shooting. The shooting leader will for each shooting tell you which lane you must be shooting on. You must hand over the control sheet to the official at the appointed lane for prone shooting, after shooting the official hand it back to you. You must bring the control sheet with you at the running loop and handed it over to the official at the appointed lane standing shooting. The official keeps it after standing shooting. After standing shooting you proceed to the finish line.

Instruction Sprint

Map

Map have been revised spring 2024.

Following classes will run on scale 1:10.000

M16, W/M20, W/M21, W/M21B, W/M35, W/M40, M45, M50, M55

All other classes will run on scale 1:7.500

Countour intervals 2,5 m

Running maps will be printed on waterproof paper

After prone shooting the second part of the courses is available with a map flip.

Start

Distance to starting point is 600 m. Following marked route. Warm up only allowed on route to start.

Runners will be called 3 minutes before starting time

- 3 min. control emit card number
- 2 min. loose control description handed out to runners with holder for this
- 1 min. wating for start time, at start time map for orienteering will be handed out

- Courses

Class	Length (m)	Controls	Scale	Water Stations	Map Size
W16	2,450	12	1:7.500	At shooting range	A4
W20	2,600	12	1:10.000	At shooting range	A4
W21	2,800	14	1:10.000	At shooting range	A4
W21B	2,600	12	1:10.000	At shooting range	A4
W35	2,600	12	1:10.000	At shooting range	A4



W40	2,600	12	1:10.000	At shooting range	A4
W45	2,450	12	1:7.500	At shooting range	A4
W50	2,450	12	1:7.500	At shooting range	A4
W55	2,450	12	1:7.500	At shooting range	A4
W60	2,170	11	1:7.500	At shooting range	A4
W65	2,170	11	1:7.500	At shooting range	A4
W70	2,170	11	1:7.500	At shooting range	A4
W75	2,170	11	1:7.500	At shooting range	A4
M16	2,600	12	1:10.000	At shooting range	A4
M20	2.960	13	1:10.000	At shooting range	A4
M21	3,410	16	1:10.000	At shooting range	A4
M21B	2,800	14	1:10.000	At shooting range	A4
M35	2.960	13	1:10.000	At shooting range	A4
M40	2,800	14	1:10.000	At shooting range	A4
M45	2,800	14	1:10.000	At shooting range	A4
M50	2,530	11	1:10.000	At shooting range	A4
M55	2,530	11	1:10.000	At shooting range	A4
M60	2,450	12	1:7.500	At shooting range	A4
M65	2,450	12	1:7.500	At shooting range	A4
M70	1,660	10	1:7.500	At shooting range	A4
M75	2,170	11	1:7.500	At shooting range	A4

Shooting area

When you enter the shooting area the shooting leader will tell you which lane you must be shooting on. Hand over your running map to the official at your appointed shooting lane. After standing shooting you proceed to the finish line, where your map must be handed over to the timekeeper.

Instruction Relay

Map

Map have been revised spring 2024.

W/M20, W/M21, W/M21B, W/M70, M95, Mix will run on scale 1:10.000

All other classes will run on scale 1:7.500

Countour interval 2,5 m

Running maps will be printet on waterproof paper.

All courses are forked.

After prone shooting the second part of the courses is available with a map flip.



Start

Starting point will be close to Event Center. Warm up only allowed in the area at the Event Center.

First start:

Class	Starting time
M21	10.00
W21	10.00
W16, W20, W70	10.10
W95, M20, M70, W120	10.10
M95,	10.20
M120, Mix	10.20

Courses

Class	Length (m)	Controls	Scale	Water Stations	Map Size
W16	3,100-3,140	15	1:7.500	At shooting range	A4
W20	3,900-4,000	15	1:10.000	At shooting range	A4
W21	4.550-4,690	15	1:10.000	At shooting range	A4
W70	3,900-4,000	15	1:10.000	At shooting range	A4
W95	3,100-3,140	15	1:7.500	At shooting range	A4
W120	2,280-2.300	11	1:7.500	At shooting range	A4
M16	3,100-3,140	15	1:7.500	At shooting range	A4
M20	4.550-4,690	15	1:10.000	At shooting range	A4
M21	5,350-5,550	18	1:10.000	At shooting range	A4
M70	4.550-4,690	15	1:10.000	At shooting range	A4
M95	3,900-4,000	15	1:10.000	At shooting range	A4
M120	3,100-3,140	15	1:7.500	At shooting range	A4
Mix	3,900-4,000	15	1:10.000	At shooting range	A4

Shooting

When you enter the shooting area the shooting leader will tell you which lane you must go to. Handed over your running map to the official at your appointed shooting lane. After standing shooting you proceed to the changeover/finish line. Your map must be handed over to the timekeeper.



Support our sponsors:



They support us